



ESTADÍSTICAS DE EQUIPO PARTIDO

MATCH TEAM STATISTICS

BRA 34 - 9 USA
(15-3) (19-6)

Match 16

Referees: PINEDA Juan / ESTRADA Félix (COL)

BRA-Brazil

Players		Shots							Offence		Defence		Punishments				TP	
No.	Name	G/S	%	6m	Wing	9m	7m	FB	BT	AS	TO	ST	BS	YC	2Min	RC		BC
2	A. DE PAULA Bruna A.	3/5	60	1/1		0/2			2/2	4	1		1					27:36
7	M. ARAUJO Tamires	2/3	67	1/2				1/1			1		1					41:36
9	RODRIGUES B. Ana P.	3/5	60	1/1	0/1		2/2		0/1	2								27:22
12	ARENHART Bárbara E.																	30:00
18	AMORIM T. Eduarda	2/3	67			1/2			1/1	2			1					29:39
19	GOMES B. Elaine	3/3	100	2/2				1/1				1	1					18:24
20	F. ARAUJO Larissa	1/3	33		0/1			1/2		1		2						38:07
21	CARDOSO C. Adriana	8/10	80	0/1	5/5		1/1	2/3		1								28:40
22	S. VIEIRA Samara	1/2	50	0/1					1/1	1		2	1		2			38:40
33	ANASTACIO Jaqueline	3/4	75			2/2		0/1	1/1	1								20:02
49	MATIELI M. Patricia	0/1	0			0/1				7	3	1						27:03
81	FACHINELLO Deonise	3/5	60			0/1		2/3	1/1	5		1						32:24
87	L. ARRUDA Renata									2								29:21
88	COSTA Mariana	5/6	83		3/3		1/1	1/2			2			1				31:20
Bench/Team																		
Totals		34/50	68	5/8	8/10	3/8	4/4	8/13	6/7	26	7	26	5	1	2			

Goalkeepers		Total Shots		6m Shots		Wing Shots		9m Shots		7m Shots		Fast Breaks		Breakthroughs	
No.	Name	S/S	%	S/S	%	S/S	%	S/S	%	S/S	%	S/S	%	S/S	%
9	RODRIGUES B. Ana P.														
12	ARENHART Bárbara E.	6/12	50	1/1	100	3/4	75	2/4	50					0/3	0
87	L. ARRUDA Renata	5/8	63	1/2	50			3/4	75	1/2	50				
Totals		11/20	55	2/3	67	3/4	75	5/8	63	1/2	50			0/3	0

Team Shots	Goals	Saves	Missed	Post	Blocked	Total	%
6m Shots	5	2		1		8	63
Wing Shots	8	2				10	80
9m Shots	3	2		2	1	8	38
7m Shots	4				n/a	4	100
Fast Breaks	8	4		1		13	62
Breakthroughs	6			1		7	86
Totals	34	10		5	1	50	68

Number of Attacks: 57 Scoring Efficiency: 60%



ESTADÍSTICAS DE EQUIPO PARTIDO

MATCH TEAM STATISTICS

BRA 34 - 9 USA
(15-3) (19-6)

Match 16

Referees:
BRA - BRAZIL

PINEDA Juan / ESTRADA Félix (COL)

Shots Distribution

Players

Goals / Shots

2 A. DE PAULA BA	7 M. ARAUJO T	9 RODRIGUES B. AP	12 ARENHART BE	18 AMORIM T. E	19 GOMES B. E	20 F. ARAUJO L
1/1	1/1	0/1		0/1		
1/2	0/1			1/1	1/1	
1/1	1/1	2/2		1/1	1/1	0/1
1-Post		1-Post				

21 CARDOSO C. A	22 S. VIEIRA S	33 ANASTACIO J	49 MATIELI M. P	81 FACHINELLO D	87 L. ARRUDA R	88 COSTA M
		2/2		1/1		1/1
	1/1					1/1
2/2		1/1		1/1		1/1
4/4				1/1		1/1
2/2				0/1		1/1
	1-Post	1-Post	1-Blocked	1-Post		

Team

Goals / Shots

2/3	3/4	0/1
1/2	2/3	2/4
11/12	9/9	4/6
5-Post	1-Blocked	

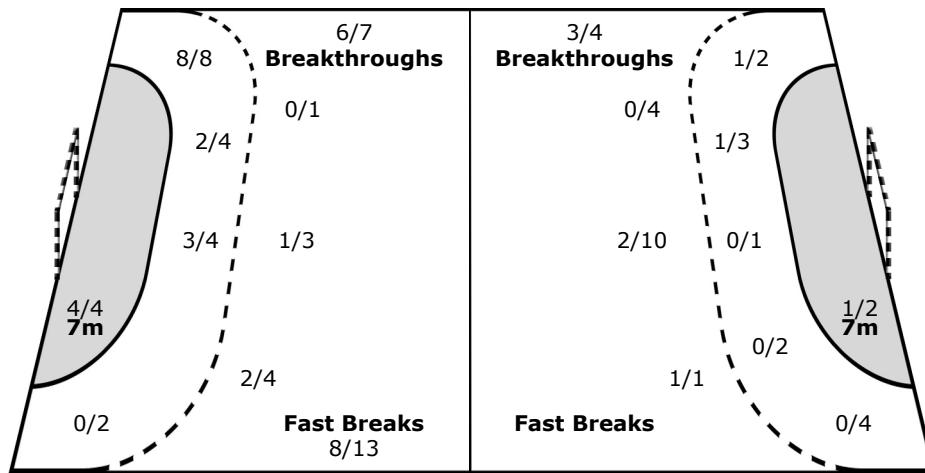
Offence

Defence

Goalkeepers

Saves / Shots

	1/1	
2/3	1/1	2/3
2/5	3/4	0/3



9 RODRIGUES B. AP

12 ARENHART BE
1/1
0/1
2/4
3/4
0/2

87 L. ARRUDA R
2/3
1/1
2/2
0/1
0/1

Legend:

%	Efficiency	+	2 Minute + 2 Minute Suspensions	2Min	2 Minute Suspensions
6m	6-metre Shots	7m	7-metre Shots	AS	Assists
BS	Blocked Shots	BT	Breakthroughs	FB	Fast Breaks
G/S	Goals/Shots	N/A	not applicable	S/S	Saves/Shots
ST	Steals	TO	Turnovers	Wing	Wing Shots
YC	Yellow Cards				
				9m	9-metre Shots
				BC	Blue Card
				RC	Red Cards
				TP	Time Played



POLIDEPORTIVO 1
SPORTS CENTER 1

LUN MON
29 JUL 2019
20:30

BALONMANO
HANDBALL

MUJERES
WOMEN

SEMIFINALES
SEMIFINALS



ESTADÍSTICAS DE EQUIPO PARTIDO

MATCH TEAM STATISTICS

BRA 34 - 9 USA
(15-3) (19-6)

Match **16**

Referees: PINEDA Juan / ESTRADA Félix (COL)

USA-United States

Players		Shots								Offence		Defence		Punishments				TP
No.	Name	G/S	%	6m	Wing	9m	7m	FB	BT	AS	TO	ST	BS	YC	2Min	RC	BC	
1	FASOLD Sophie																	30:00
4	GASCON Sarah	1/2	50	1/2							1				1			45:31
8	LOMBARD Zoe										1							26:15
9	DARLING Kathleen																	
10	BUTLER Ashley	0/3	0		0/2	0/1				1	3							27:43
11	TAYLOR Julia	1/2	50		1/2						3			1				43:19
12	NEWBERN Bryana																	30:00
14	FITHIAN Jennifer														1			32:22
15	ANDERSEN Nicole	2/10	20	0/1		1/6	1/2		0/1	3	6							45:02
17	HARTNETT Elizabeth	0/2	0		0/2													17:25
19	SAYER Julia	0/5	0	0/1		0/4				2	5		1					40:56
21	CHRISTENSEN Sif	0/1	0			0/1					1							6:46
22	RHOADS Jence	5/8	63	0/2		2/3			3/3	2	4	1						48:54
24	VALLONE Maria																	25:25
Bench/Team																		
Totals		9/33	27	1/6	1/6	3/15	1/2		3/4	8	25	7	1	1	2			

Goalkeepers		Total Shots		6m Shots		Wing Shots		9m Shots		7m Shots		Fast Breaks		Breakthroughs	
No.	Name	S/S	%	S/S	%	S/S	%	S/S	%	S/S	%	S/S	%	S/S	%
1	FASOLD Sophie	4/19	21	1/2	50	1/4	25	1/1	100	0/2	0	1/7	14	0/3	0
12	NEWBERN Bryana	6/25	24	1/5	20	1/6	17	1/4	25	0/2	0	3/5	60	0/3	0
Totals		10/44	23	2/7	29	2/10	20	2/5	40	0/4	0	4/12	33	0/6	0

Team Shots	Goals	Saves	Missed	Post	Blocked	Total	%
6m Shots	1	2	2	1		6	17
Wing Shots	1	3	2			6	17
9m Shots	3	5	1	1	5	15	20
7m Shots	1	1			n/a	2	50
Fast Breaks							
Breakthroughs	3			1		4	75
Totals	9	11	5	3	5	33	27

Number of Attacks: 58 Scoring Efficiency: 16%



ESTADÍSTICAS DE EQUIPO PARTIDO

MATCH TEAM STATISTICS

BRA 34 - 9 USA
(15-3) (19-6)

Match 16

Referees: PINEDA Juan / ESTRADA Félix (COL)
USA - UNITED STATES

Shots Distribution

Players

Goals / Shots

1 FASOLD S	4 GASCON S	8 LOMBARD Z	9 DARLING K	10 BUTLER A	11 TAYLOR J	12 NEWBERN B
	0/1 1/1				0/1 1/1	

2-Missed 1-Post

14 FITHIAN J	15 ANDERSEN N	17 HARTNETT E	19 SAYER J	21 CHRISTENSEN S	22 RHOADS J	24 VALLONE M
	0/1 1/1	0/2 1/1	0/2	0/1 1-Blocked	0/1 2/2	1/1 1/2

2-Post 3-Blocked

2-Missed

1-Blocked

1-Blocked 1-Missed

Team
Goals / Shots

	0/1	
1/3	0/1	1/3
3/5	1/4	3/3

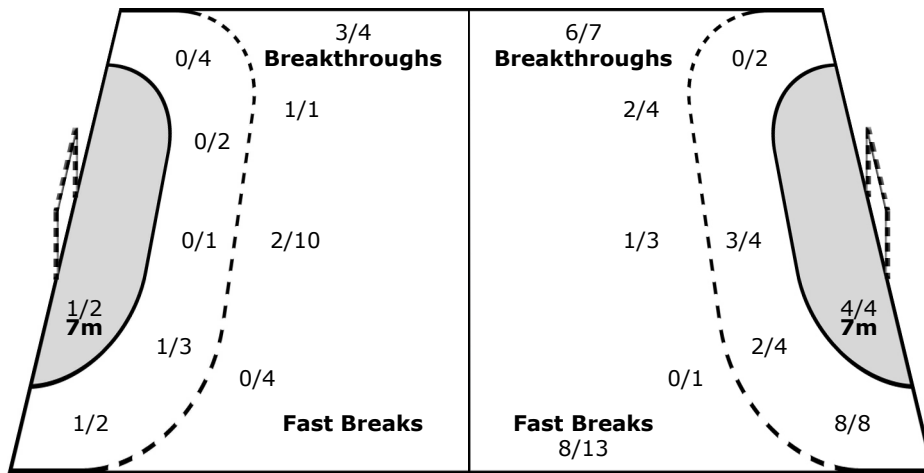
5-Missed 3-Post 5-Blocked

Offence

Defence

Goalkeepers
Saves / Shots

1/3	1/4	1/1
1/2	1/3	2/4
1/12	0/9	2/6



1 FASOLD S

0/2	1/2	
1/2	1/1	
1/8	0/3	0/1

12 NEWBERN B

1/1	0/2	1/1
	0/2	2/4
0/4	0/6	2/5

Legend:	% Efficiency	+ 2 Minute + 2 Minute Suspensions	2Min 2 Minute Suspensions
6m 6-metre Shots	7m 7-metre Shots	9m 9-metre Shots	AS Assists
BS Blocked Shots	BT Breakthroughs	BC Blue Card	FB Fast Breaks
G/S Goals/Shots	N/A not applicable	RC Red Cards	S/S Saves/Shots
ST Steals	TO Turnovers	TP Time Played	Wing Wing Shots
YC Yellow Cards			